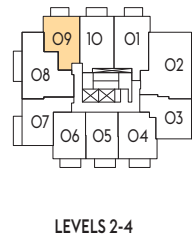
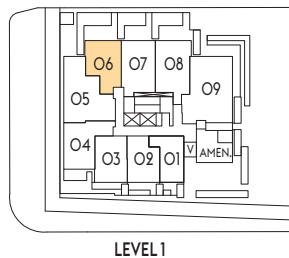
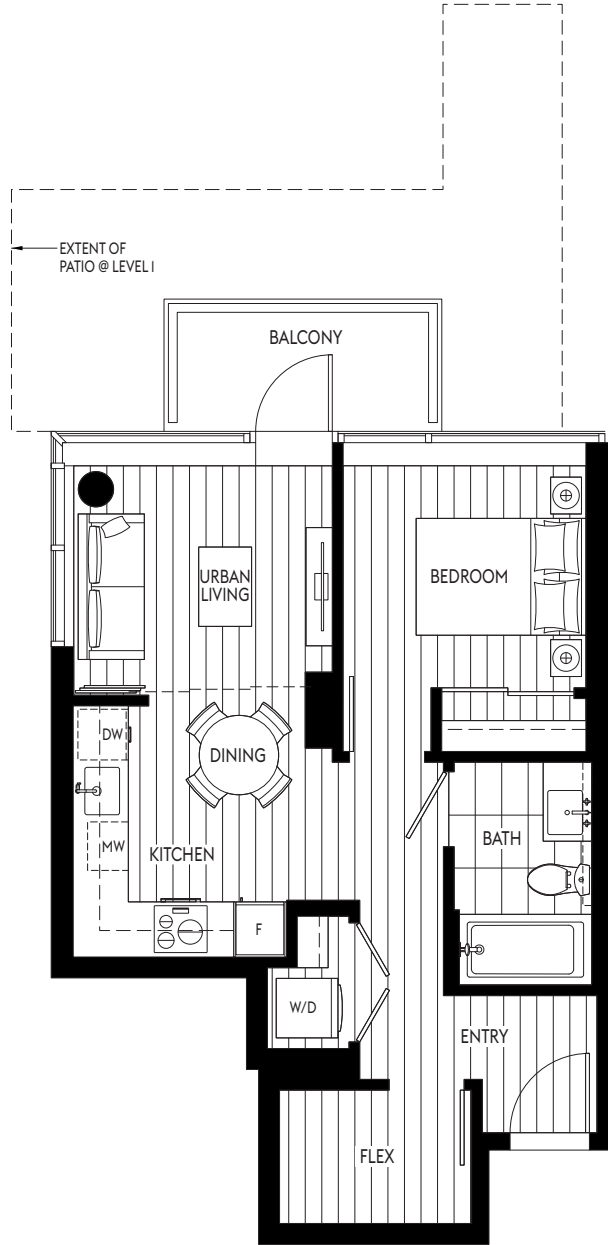


# B

URBAN 2, 1 BATH  
+ FLEX

**LEVEL 1:**  
LIVING 534 SF  
PATIO 193 SF  
**TOTAL 727 SF**

**LEVELS 2 - 4:**  
LIVING 535 SF  
BALCONY 53 SF  
**TOTAL 588 SF**



Revised February 8, 2022

The developer reserves the right to substitute any material, fixture, appliance or finishing with an equivalent material, fixture, appliance or finishing at the developer's sole discretion. In our continuing effort to improve product, we reserve the right to modify or change plans, specifications, or prices without notice. Renderings are an artist's conception only and are intended as a general reference. All dimension and sizes are approximate. Refer to disclosure statement for specific offering details. E.&O.E.